

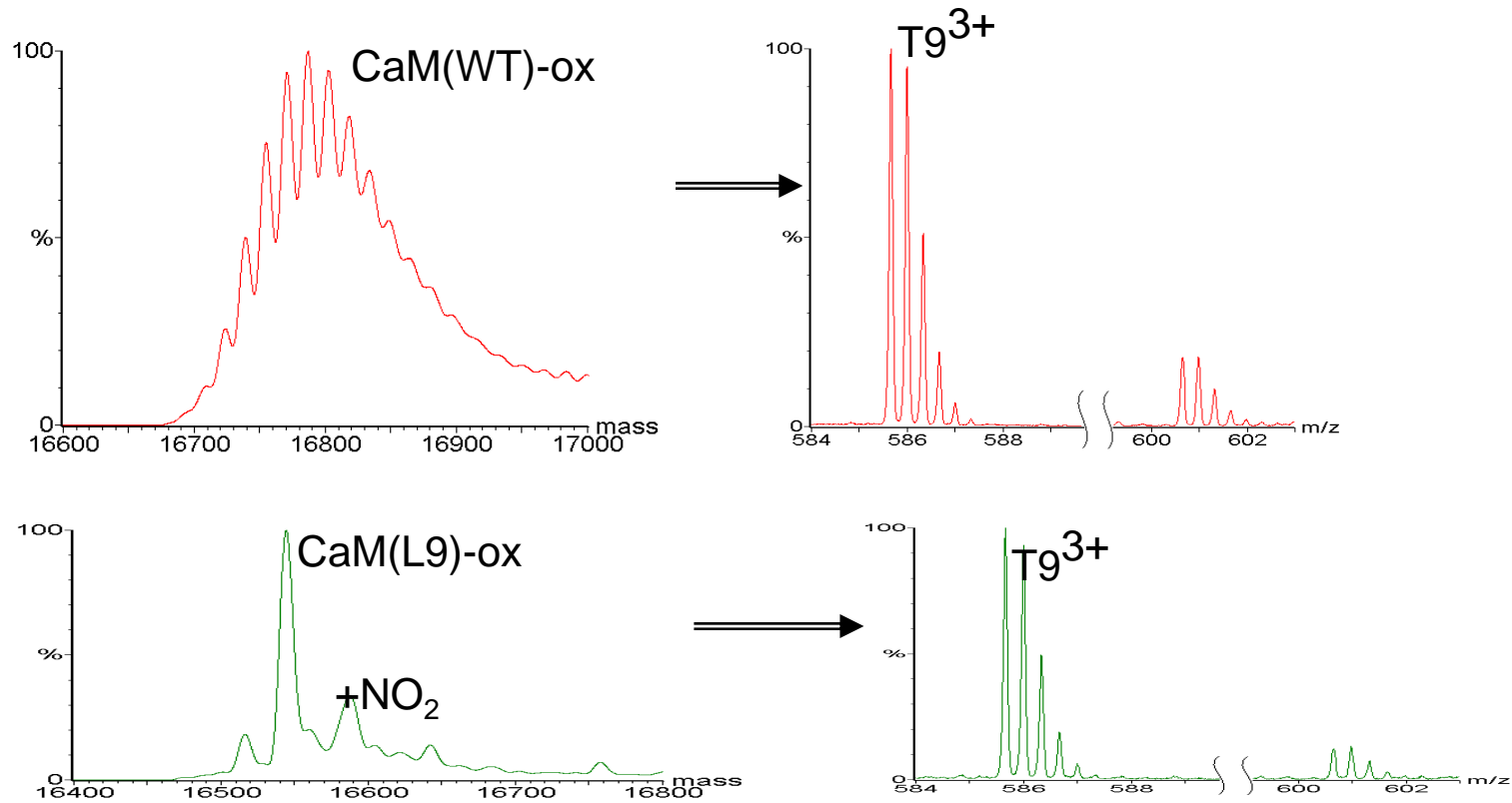
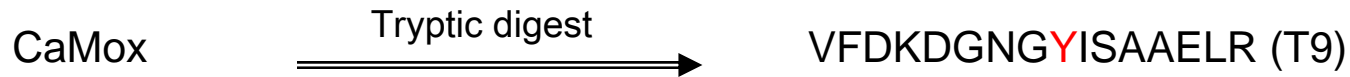
Synthetic Support

Todd Williams, Ph.D.

Director KU Mass Spectrometry and Analytical
Proteomics Laboratory

Synthetic Support

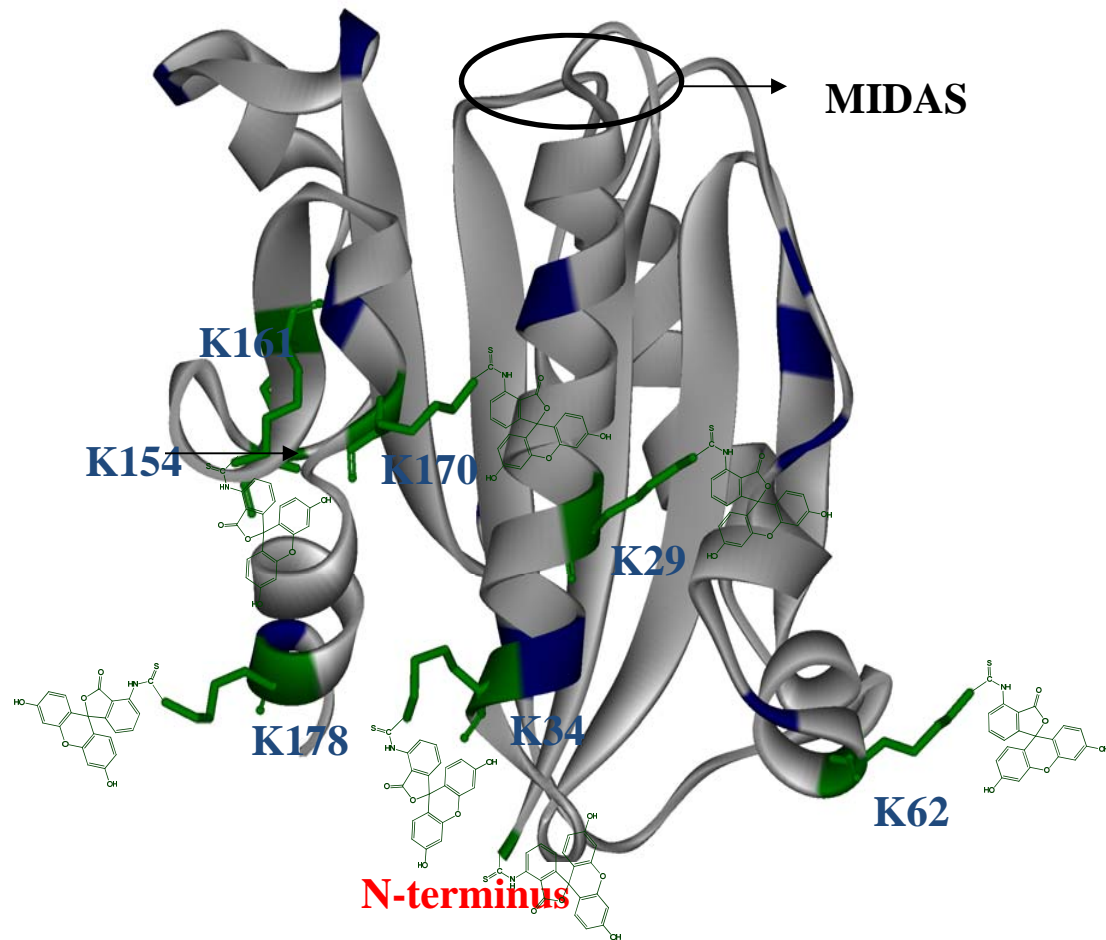
Important Calcium handling protein modified to determine function after oxidation



H. S. Smallwood et al., " Selective Nitration of Tyr⁹⁹ in Calmodulin as a Marker of Cellular Conditions of Oxidative Stress" *Chem. Res. Toxicol.* **2003**, *16*, 95-102

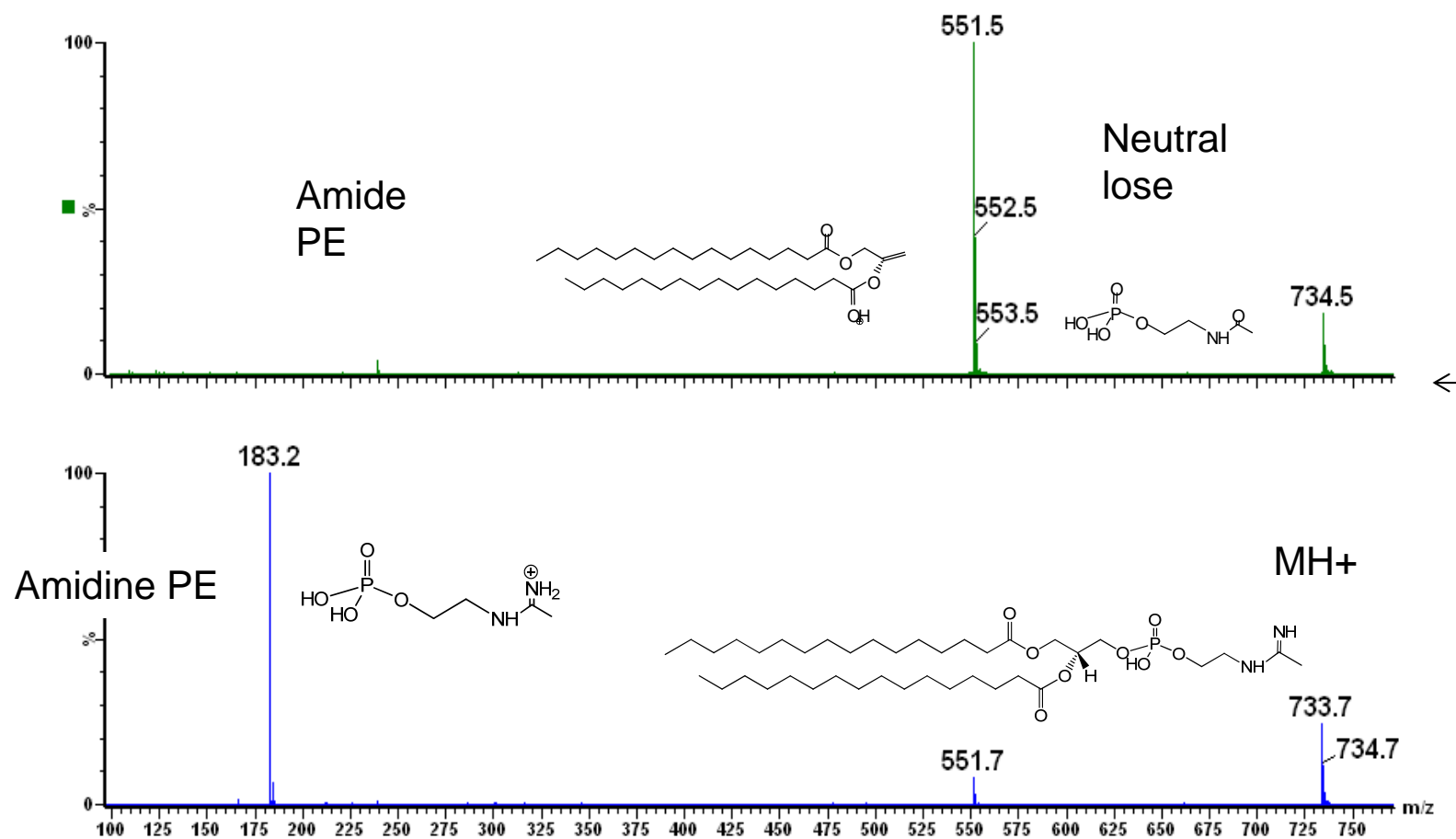
Synthetic Support

A protein subdomain labeled such that activity is preserved but can be followed into a cell by microscopy.



Synthetic Support

One atom change drastically changes fragmentation



Contact Info

Todd Williams, Ph.D.

Director KU Mass Spectrometry and Analytical Proteomics Lab
3006 Malott Hall 785-864-3223
1083 Structural Biology Center 785-864-3152
twilliams@ku.edu

Nadezhda Galeva, Ph.D.

Research Associate MS & APL
SBC room 1088 785-864-3691
galeva@ku.edu

Lawrence Seib

Research Assistant

Robert Drake

Research Instrument Operator

msslabs1@ku.edu

785-864-3280
Malott rooms B025 3006
Labs 3002 3006 1008